

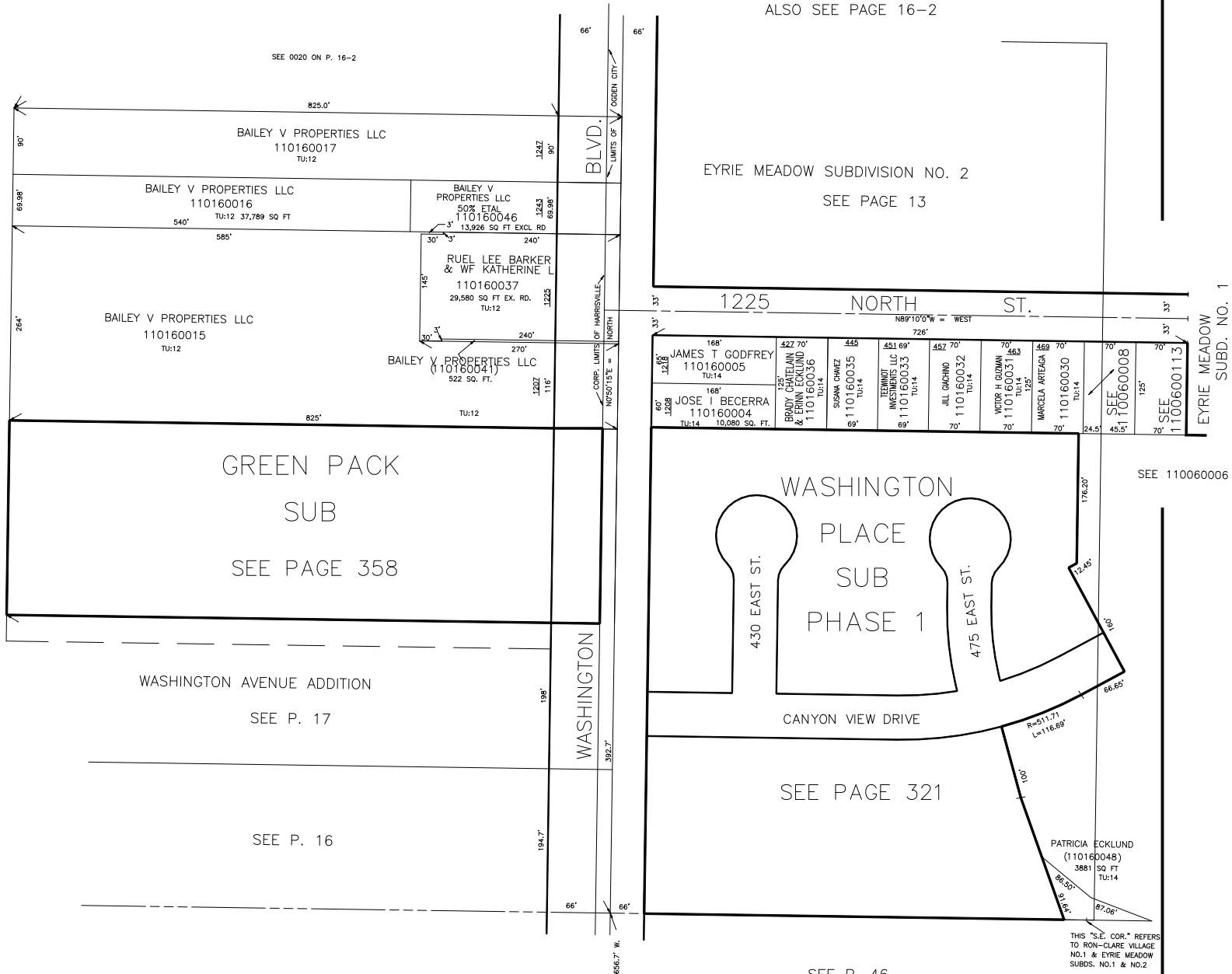
PART OF S.E. 1/4
SECTION 5, T.6N.,R.1W., S.L.B.&M.

IN THE TOWN OF HARRISVILLE & OGDEN CITY

TAXING UNIT: 12,14

SCALE 1" = 100'

PREFIX:11-016



ALSO SEE PAGE 16-2

EYRIE MEADOW SUBDIVISION NO. 2
SEE PAGE 13

1225 NORTH ST.

168' 127.5'	422 70' 168'	445' 110160035	451 69' 110160033	452 70' 110160032	70' 110160031	489 70' 110160030	70' 110160008	70' 1100600113
JAMES T GODFREY 110160005 TU:14	BRADY CHATELAIN & ERIN ECKLUND 110160036 TU:14	SUSANA CHAVEZ 110160035 TU:14	LEHNIOT INVESTMENTS LLC 110160033 TU:14	JILL GACHINO 110160032 TU:14	VICTOR H GUZMAN 110160031 TU:14	MARCELA ARTEAGA 110160030 TU:14	SEE 110060008	SEE 1100600113
60' 128'	168' 110160004 TU:14	10,080 SQ. FT.						

EYRIE MEADOW SUBD. NO. 1
SEE P. 7

GREEN PACK SUB
SEE PAGE 358

WASHINGTON PLACE SUB PHASE 1

WASHINGTON AVENUE ADDITION
SEE P. 17

CANYON VIEW DRIVE
SEE PAGE 321

SEE P. 16

PATRICIA ECKLUND
(110160048)
3881 SQ FT
TU:14

SEE P. 46
RON-CLARE VILLAGE NO. 1

THIS "S.E. COR." REFERS TO RON-CLARE VILLAGE NO.1 & EYRIE MEADOW SUBDS. NO.1 & NO.2